

Grade C



Sterling  
(200661)



Marigold  
(200656)



Paprika  
(200658)



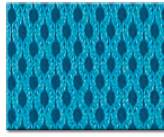
Wine   
(200650)



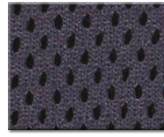
Mocha  
(200657)



Limelight  
(200655)



Caribbean  
(200652)



Pewter   
(200651)



Ink   
(200649)



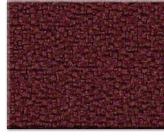
Black   
(200648)


Spacer

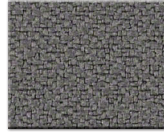
Grade 1



Toast   
(200714)




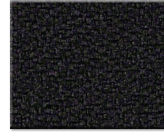
Peony   
(200710)



Char   
(200703)



Midnight   
(200709)



Jet   
(200707)

Ace



Grade 2



Sumac



Bordeaux



Safari



Ink



Onyx


Canter  
Momentum  
Textiles  
(faux leather)

Grade 3




Comet   
(200714)



Falling Star   
(200710)



New Haze   
(200703)



Fog   
(200709)

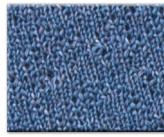



Thunder   
(200707)

Cloud 9™




Tropical Rain   
(200714)




Sky Blue   
(200710)



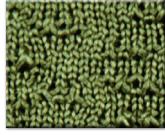
Midnight Sky   
(200703)



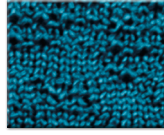
Dark Horizon   
(200709)



Red Dawn   
(200707)



Fennel



Biscay




Ink   
(200703)

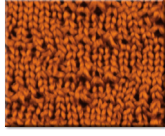


Beanery

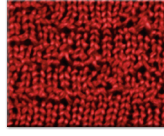


Ebony   
(200707)

Revive™



Harvest



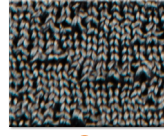
Spice



Canvas

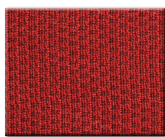


Goose   
(200709)



Metal   
(200707)

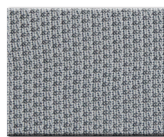
U4ia® Mesh



Cognac  
(M2)



London  
(M1)



Silver  
(M5)



Ivory  
(M4)



Mocha  
(M3)

The colors on this card are digital representations, please refer to an actual sample before finalizing your fabric selection.



5 day Quick Ship

	Spacer	Ace	Cloud 9™	Revive™	U4ia® Mesh
Content	100% Polyester	80% Post-industrial Recycled Polyester, 20% Post Consumer Recycled Polyester	100% Polyester	100% Post-consumer Recycled Polyester	100% Polyester
Finish	None	Nano-Tex™ Stain Resistant Finish	NA	NA	NA
Width	54"	54"	NA	NA	NA
Weight/linear yard	16 oz/lin yd	13.8 ± 1.0 oz/lin yd	NA	17.0 ± 0.5 oz/lin yd	16 oz per sq yd
Cleaning Code	W	W	WS	WS	W

## Performance

Breaking Strength ASTM D-5034	warp:	200 lbs min	warp:	298 lbs min	warp:	NA	warp:	200 lbs min	warp:	185 lbs min
	fill:	200 lbs min	fill:	260 lbs min	fill:	NA	fill:	200 lbs min	fill:	185 lbs min
Seam Slippage ASTM D-434	warp:	40 lbs min	warp:	82 lbs min	warp:	NA	warp:	40 lbs min	warp:	NA
	fill:	40 lbs min	fill:	76 lbs min	fill:	NA	fill:	40 lbs min	fill:	NA
Brush Pilling ASTM D-3511	class 4.0		class 5.0		class 4.0		class 4.0		class 4.0	

## Abrasion

ASTM D-4157 Mod.	1,002,000 double rubs	1,000,000+ double rubs	335,000 double rubs	125,000 double rubs	250,000 double rubs
------------------	-----------------------	------------------------	---------------------	---------------------	---------------------

## Color fastness

to light AATCC-16	40 hrs min		40 hrs, class 5.0		40 hrs, class 5.0		40 hrs min		40 hrs	
to crocking AATCC-8	wet:	class 3.0	wet:	class 4.0	wet:	class 4.0	wet:	class 3.0	wet:	class 3.0
	dry:	class 4.0	dry:	class 4.0	dry:	class 3.0	dry:	class 4.0	dry:	class 4.0

## Flammability

Calif. Tech. Bull. 117	passes	passes	passes	passes	passes
------------------------	--------	--------	--------	--------	--------

See [NeutralPosture.com](http://NeutralPosture.com) for additional upholstery options.